

DE

Wartungsplan

Dürr Dental Saugmaschinen
V 6000 - V 18000
mit Zentral-Separierbehälter

EN

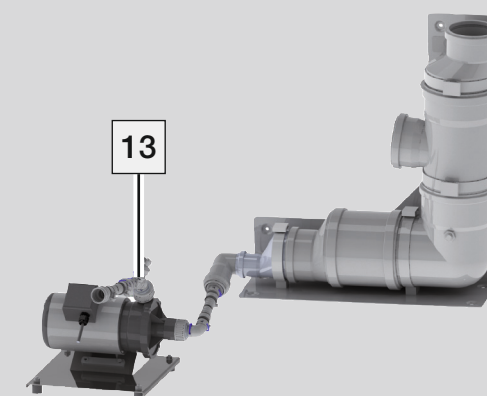
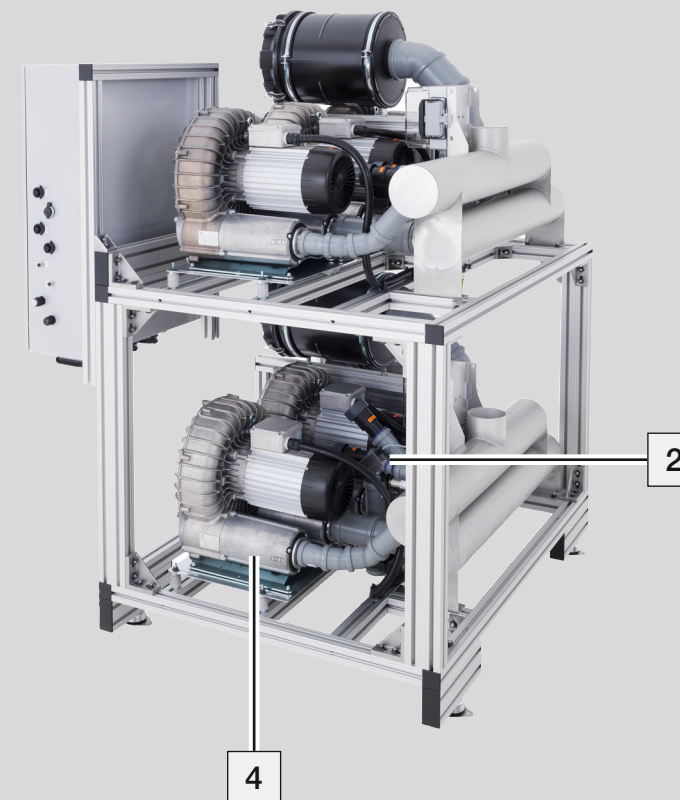
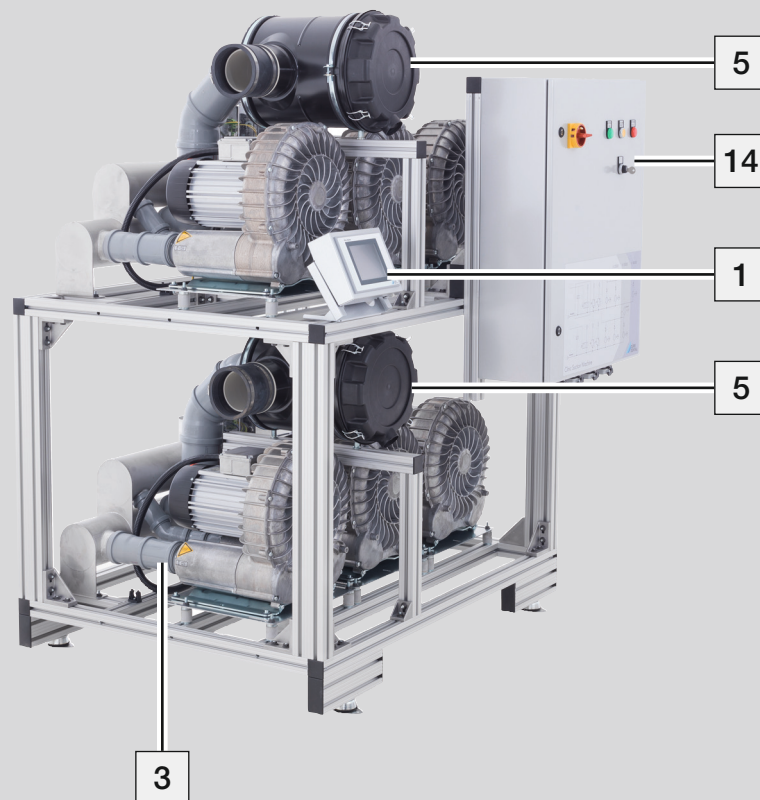
Maintenance plan

Dürr Dental suction machines
V 6000 - V 18000
with central separator tank

1806100008L40

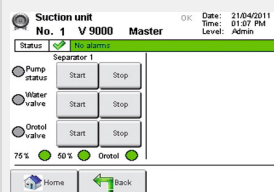


2021/03



1
7, 8, 9

check
after 12 months



each motor
in manual mode
+
Water Valve
Orotol Valve
Drain Pump

9000-303-78
9000-303-89
9000-341-16

2

change
after 24 months

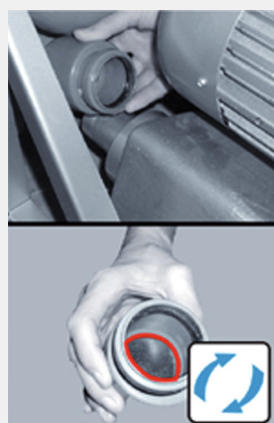


mech. and electr.
Bypass Valve

7130-060-00
7560-500-60
0705-484-50

3

change
after 24 months

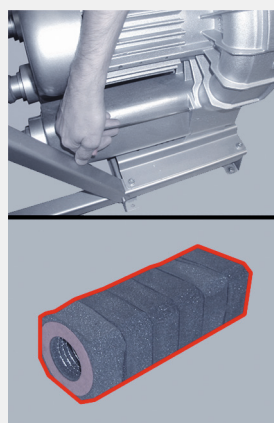


Non-Return Flaps

0705-405-00

4

check
after 48 months



0705-481-50
(up to 2013)

1802-481-50
(since 2014)

5

change
after 3500 hours
or 2 years



0705-991-05

6

**check /
change**
coars filter inlet



check and clean
after 1 - 3 months

change
after 2 years

0704-403-60

10

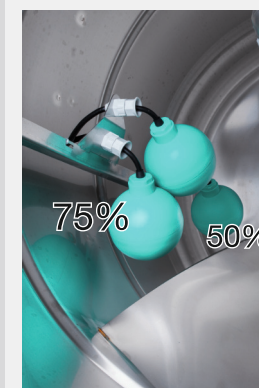
change
after 24 months



9000-416-42
0704-493-00

11

check
after 12 months



9000-139-19

12
13

change
after 12 months



Non-Return Flaps
(two pieces)

7128-100-03E
0700-700-14

14

change
after 24 months



Relais 2 W 24 V AC
or
Relais 2 W 24 V DC
(Pay attention to
colours)

9000167024
9000167023