

DE

Wartungsplan

Dürr Dental Kompressoren
P 6000 - P 12000

EN

Maintenance plan

Dürr Dental Compressors
P 6000 - P 12000



5922100035L40



2021/04



1

2

3

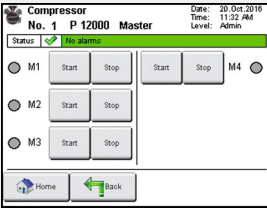
4

5

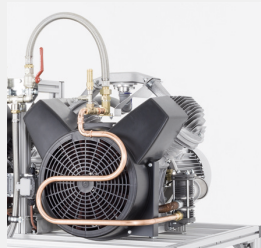
6

check

after 12 months

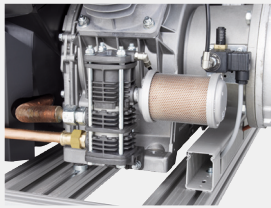


each motor
in manual mode



change

after 24 months

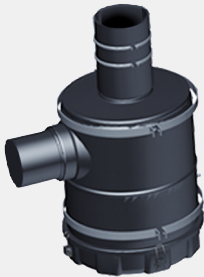


silencer for
solenoid valve
9000-416-01

and relief valve
5931-616-51

change

after 3500 h



0705-991-05

check

after 12 months



vibration damper



5931617001

check

after 12 months



pressure
dew point

check /
change

cyclone separator



check via test button
after 1 year
change the service
unit

9000-324-44