

## VistaScan Perio Plus



Only fully-qualified personnel may set-up, install or operate this appliance.

### Minimum requirements

Imaging program	DBSWIN or VistaEasy by Dürr Dental Third-party software on request
Computer system	See "System requirements for computer systems for imaging" (9000-618-148/01)



## 1 Connecting up the device

The device can be connected to the USB or network.  
The connecting cables are contained in the scope of delivery.



Do not connect the device to the USB and to the network at the same time.

- Connect the connecting cable (USB/network) to the device.
- If necessary, connect the network cable with the network.



Only connect the USB connecting cable to the computer when the installation assistant asks you to do so.

- Switch the device on.

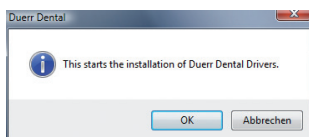
## 2 Installation

### 2.1 Driver installation (only for USB connection)

- Close all programs.
- Place the provided DBSWIN DVD (from Version 5.3) into the DVD drive. The start window opens.
- If the DVD does not start automatically, execute the file "CD\_Start.exe".
- Select the required language.
- Go to the "Driver" tab.



- Click "Duerr Dental Driver Installation".



- Confirm the message by clicking "OK".  
The "Duerr Dental Driver Setup" installation assistant starts.
- Follow the instructions of the installation assistant.

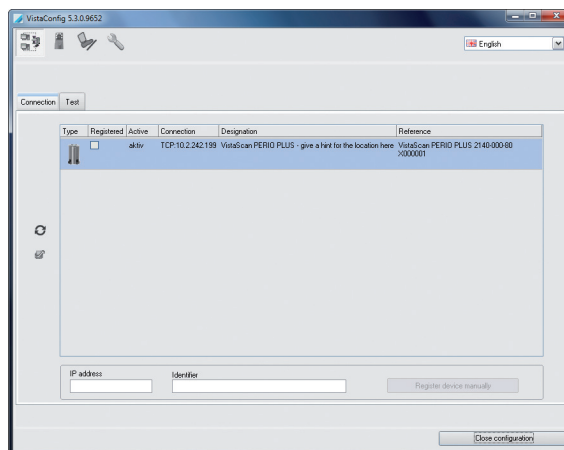
### 2.2 Setting up the network (only for network connection)

- Switch on the network devices (router, PC, and switch).
- Check that TCP port 2006 and UDP port 514 are released in the firewall being used; if not, release them.  
If you are using the Windows firewall, you do not need to check the ports since you are asked if you want to release them during the driver installation process.

## 3 Configuration

For both connection types (USB and network), the configuration takes place using VistaNetConfig, which is automatically installed during the installation of DBSWIN or VistaEasy.

- Click **Start > All Programs > Dürr Dental > VistaConfig > VistaNetConfig**.

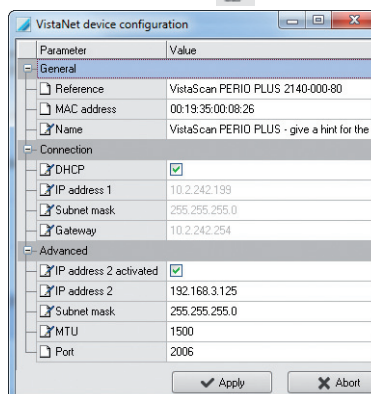


- Click the "Refresh" symbol
- Activate the connected device in the "Registered" column.  
You can also register multiple devices.

### 3.1 Configuring the device with a USB connection

You can change the device name and query the configuration in the "VistaNet device configuration" window.

- Click the "Edit" button

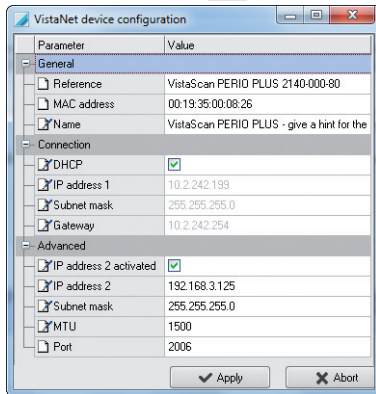


- If necessary, change the name.
- Click "Apply" to save the configuration.

### 3.2 Configuring the device with a network connection


You can change the device name, manually enter an IP address, and query information in the "VistaNet device configuration" window.

- Click the "Edit" button .



#### Entering a permanent IP address (recommended)

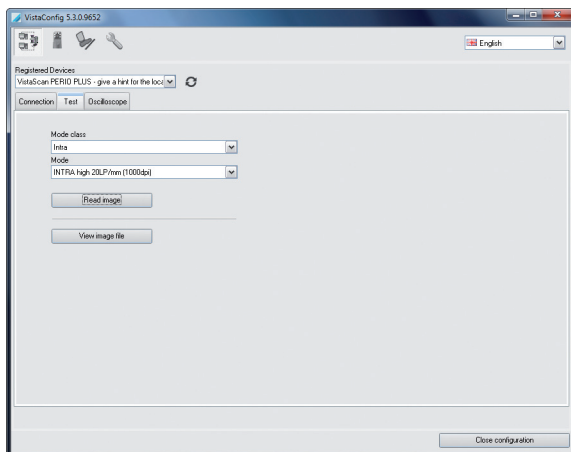
- Deactivate DHCP.
- Enter an IP address, subnet mask, and gateway.
- Click "Apply" to save the configuration.

 To restore the device to the factory settings, hold down the reset button on the device for 15 to 20 seconds whilst switching the device on.

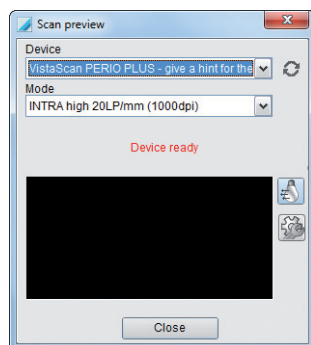
### 4 Testing the device

You can read in an X-ray image to test whether or not the device is connected up properly.

- Go to the "Test" tab.



- Select the device from the "Registered Devices" selection list.
- Select the mode class.
- Select the mode.
- Click "Read image".



- Read in the image plate.

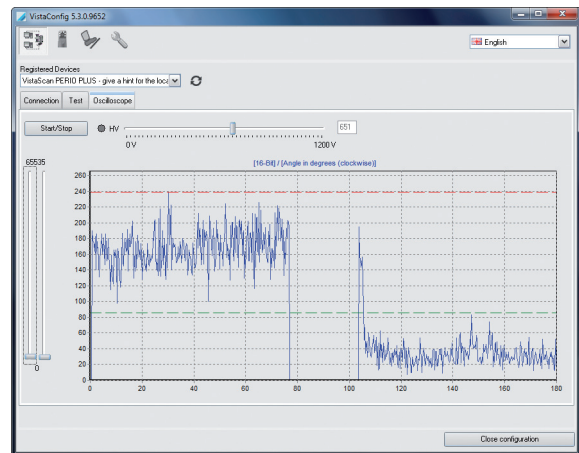


To scan image data, refer to the VistaScan Perio Plus installation and operating instructions (order number 9000-618-167/..).

### 5 Check amount of light exposure

The oscilloscope can be used to measure the amount of light exposure to the unit.

- Choose the „Oscilloscope“ option.
- Select the device from the "Registered Devices" selection list.
- Slide the regulator bar for the HV value to 650.
- Click „Start/Stop“ to begin measurements.
- Click „Start/Stop“ to end measurements.
- Pull the left hand slider bar downwards until all three lines can clearly be seen.



Blue line: Measured light exposure

Red line: Maximum value

Green line: Average value

The test has been passed successfully when the measured value does not exceed 450.

- When the maximum value is higher than 450, reduce the amount of room lighting.

### 6 Electrical safety check

- Carry out the electrical safety check in accordance with national and local regulations.
- Document the results.

